

C. Identify common animal parasites and their symptoms

Parasites

Parasite:

- **Any organism that lives on/in another organism**
- **Causes the host harm**
- **Parasites will die without a host**



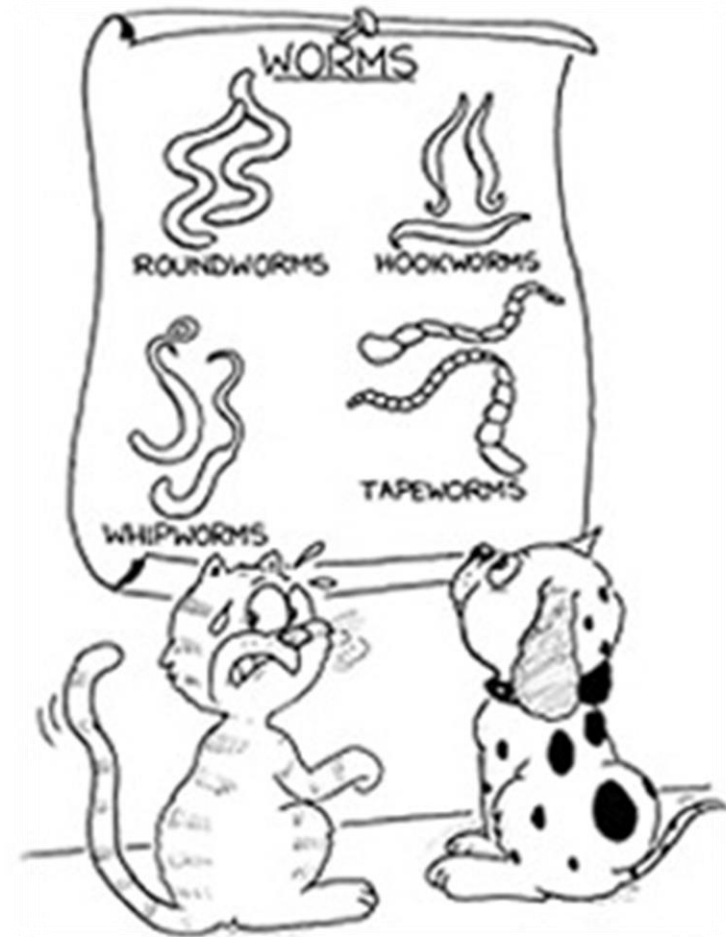
Animal Diseases & Parasites.

C. Identify common animal parasites and their symptoms

Parasites

Internal Parasite:

- Live **INSIDE** it's host



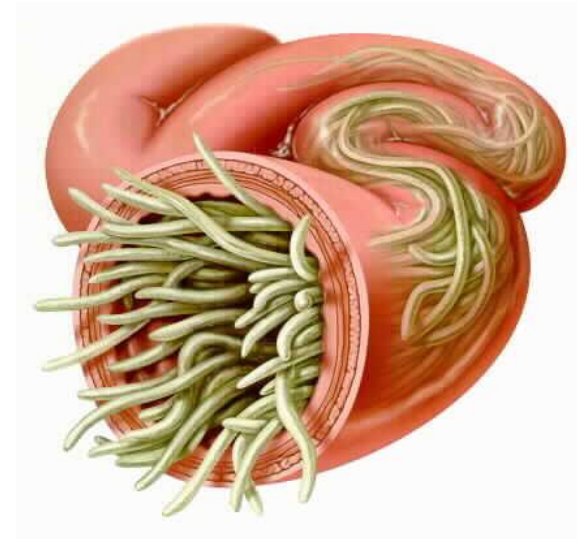
Animal Diseases & Parasites.

C. Identify common animal parasites and their symptoms

Parasites

Internal Parasite: Roundworm

- Looks like spaghetti
- Found in intestines



C. Identify common animal parasites and their symptoms

Parasites

Internal Parasite: Tape Worm

- Long and flat in intestines
- Break off in sections which look like rice in the stool



C. Identify common animal parasites and their symptoms

Parasites

Internal Parasite: Hook Worm

- Small, hook shape
- Attaches to walls of intestine



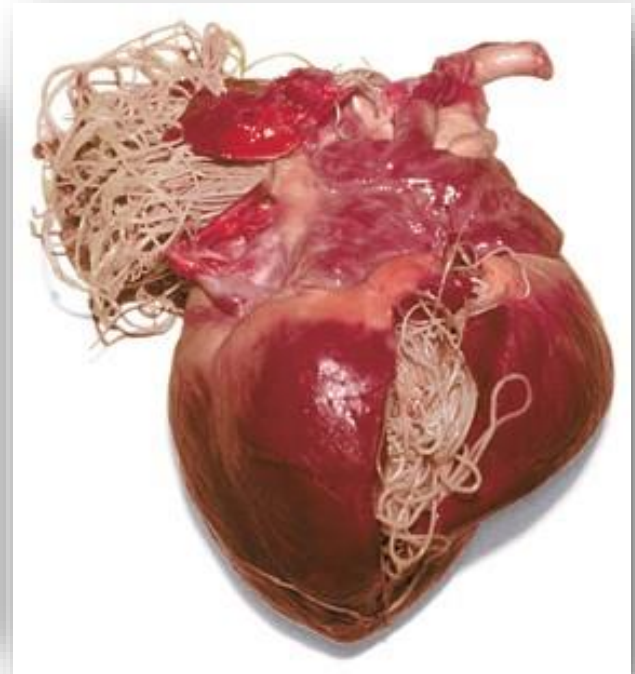
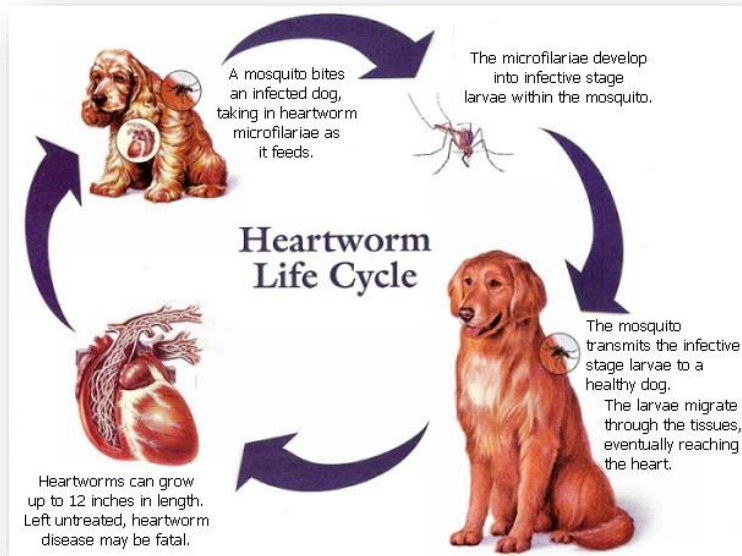
Animal Diseases & Parasites.

C. Identify common animal parasites and their symptoms

Parasites

Internal Parasite: Heartworm

- **Found in circulatory system**
- **Eventually blocks heart valves**



C. Identify common animal parasites and their symptoms

Parasites

External Parasite:

- **Lives OUTSIDE** it's host

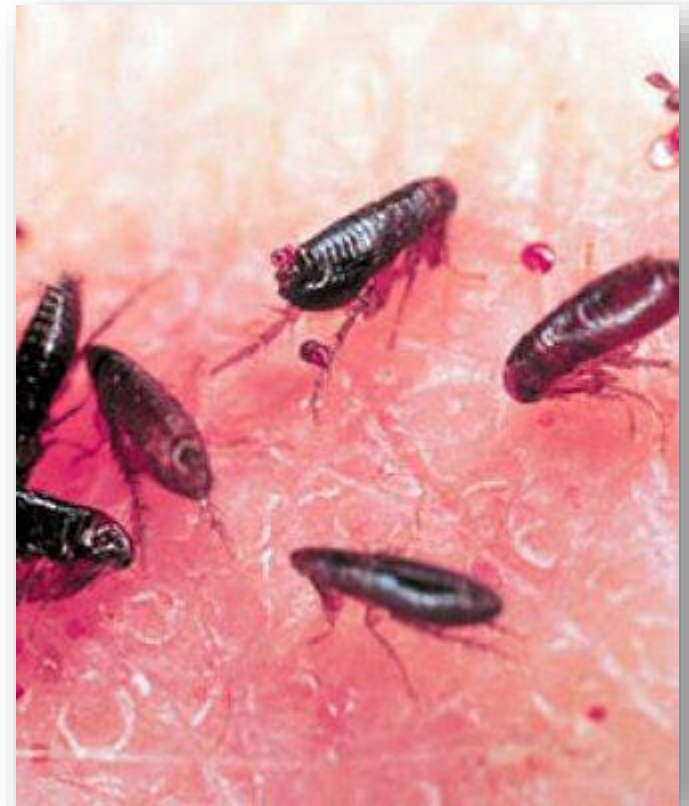


C. Identify common animal parasites and their symptoms

Parasites

External Parasite: Flea

- **Causes extreme Itching**
- **Not found in Utah!**
(They don't survive the winters here)
- **Can infect houses, live in couches, etc**



C. Identify common animal parasites and their symptoms

Parasites

External Parasite: Flies

- Problem in the late summer & early fall
- Flies are attracted to animals
- Flies are annoying, but biggest problem is that they transmit disease



Animal Diseases & Parasites.

C. Identify common animal parasites and their symptoms

Parasites

External Parasite: Maggots

- Fly larvae (eggs)
- This parasite begins as external and then becomes internal

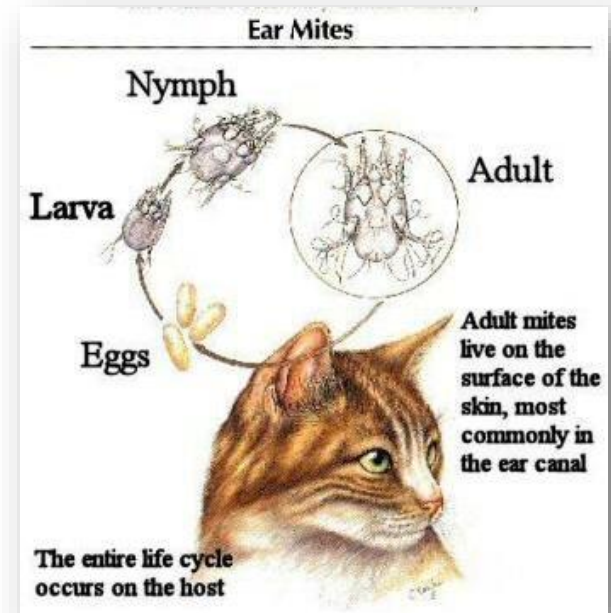


C. Identify common animal parasites and their symptoms

Parasites

External Parasite: Mites

- Live on surface of skin
- Attracted to warm, moist places such as the ear



C. Identify common animal parasites and their symptoms

Parasites

External Parasite: Ticks

- **Attach themselves to body and suck blood**
- **Can transmit Lyme Disease**



C. Identify common animal parasites and their symptoms

Parasites

How are Parasites Transmitted?

- Ingesting infected feces
- From mother to fetus
- Mosquitos (heartworm)
- Eating flesh of infected animal
 - Ie: Cat eating mouse



Animal Diseases & Parasites.

C. Identify common animal parasites and their symptoms

Parasites

How are Parasites Transmitted?



Animal Diseases & Parasites.



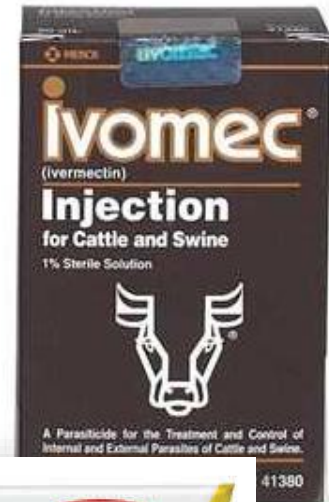
C. Identify common animal parasites and their symptoms

Parasites

Preventing Parasites

Internal:

- Pills
- Pastes
- Crumbles
- Injections



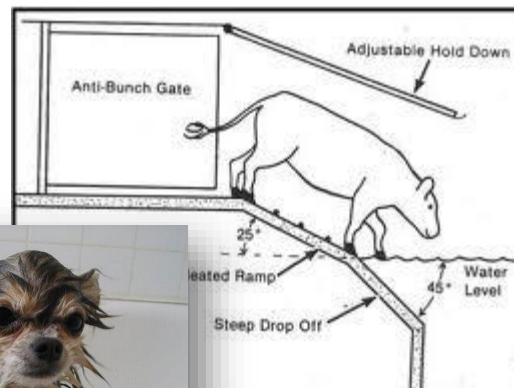
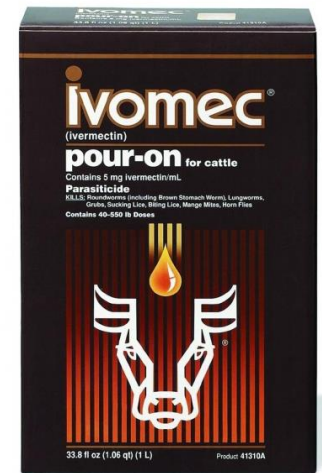
C. Identify common animal parasites and their symptoms

Parasites

Preventing Parasites

External:

- Topical Medications
- Anti parasitic dips
- Sprays & Powders



C. Identify common animal parasites and their symptoms

Parasites

External = Stand

Internal = Sit



C. Identify common animal parasites and their symptoms

Parasites

Name that Parasite

