

Cell Transport

The movement of molecules through the cell membrane

Two Types of Transport:
Passive & Active

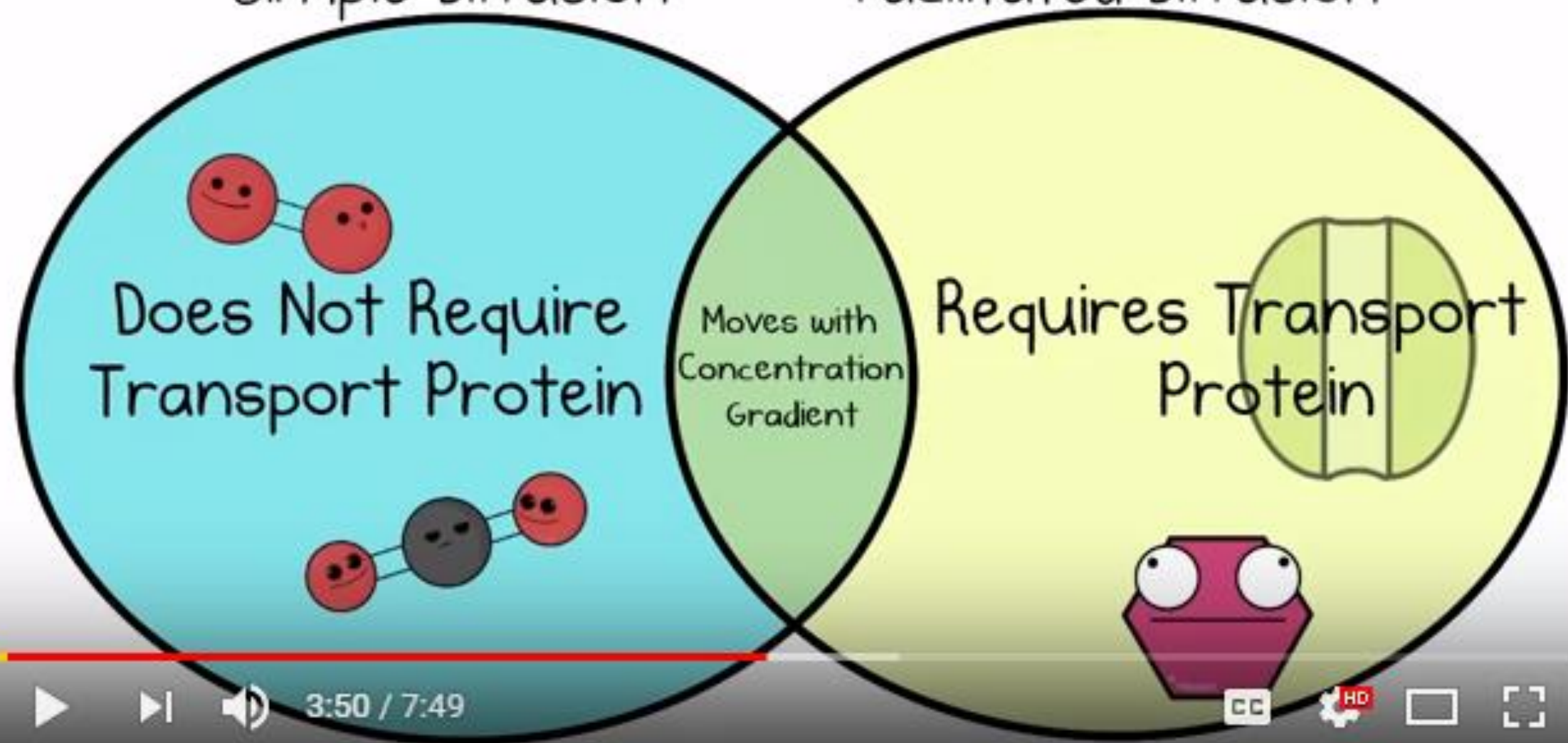
Passive Transport:

- Movement of molecules through the cell membrane from HIGH concentration to LOW concentration.
- Does NOT require energy
- Two types of Passive Transport:
 - SIMPLE DIFFUSION: small molecules go directly through the cell membrane (like O₂ & CO₂)
 - FACILITATED DIFFUSION: Larger molecules using PROTEIN CHANNELS to move through the cell membrane.

2 TYPES OF PASSIVE TRANSPORT i

Simple Diffusion

Facilitated Diffusion



3:50 / 7:49



ACTIVE TRANSPORT

- Movement of molecules through the membrane from LOW concentration to HIGH concentration.
- Requires ENERGY. (ATP energy)
- Requires Protein Channels or Vesicles
- Examples:
 - Endocytosis (Large molecules going in the cell)
 - Exocytosis (Large molecules going out of the cell)